



JURUTERA PERUNDING

— since 1999 —

ENGINEERING THE WAY FORWARD



MEETING CHALLENGES
CAPTURING OPPORTUNITIES
DELIVERING EXCELLENCE



CONTENTS

04
ABOUT SNA

06
OUR DNA

08
VISION, MISSION & CORE VALUES

10
THE SNA FORCE

18
INVESTING IN EXCELLENCE

20
CAPABILITY & COMPETENCY

22
SERVICES AND SOLUTIONS

24
CIVIL ENGINEERING

26
STRUCTURAL ENGINEERING

28
GEOTECHNICAL ENGINEERING

30
STRATEGIC ADVISE & OTHER
SERVICES

PROVEN PROJECT PORTFOLIO

34



50



58



66



72



46



52



64



70



76



ABOUT SNA

SNA Consult Sdn Bhd was incorporated in Malaysia in 1999. We provide the full spectrum of professional engineering consultancy services from design through contract administration, construction supervision and checking to maintenance.

Today, we have a team of 200 engineers, technicians, draughtsmen and administrative staffers working on a diverse portfolio of large-scale projects.

Our line-up of completed projects include residential, commercial and institutional buildings; infrastructure works; harbour and marine installations; and public utility throughout Malaysia.

Certified to ISO 9001:2008 and MS ISO/IEC 9001:2015, we are registered with the Board of Engineers Malaysia and the Ministry of Finance, Malaysia.



Registration as Civil & Structural Consultant with Board of Engineer Malaysia



Qualify for ISO 9001 : 2008 international Quality Management System



Registration as Civil & Structural Consultant with Green Building Index (GBI)



Registration as Civil & Structural Consultant with Suruhan Perkhidmatan Air Negara (SPAN)



Registration of SNA Consult Sdn Bhd with Ministry of Finance, Malaysia

Over the years, we have maintained a strong forward momentum and solid business growth in terms of contract size, quality, complexity, scale and value. We have never stopped investing in human resource, innovation and technology to stay at the forefront.

SNA is built on consulting expertise, efficiency and excellence. Our culture is about optimum performance bound neither by the norm nor the constraints. With each new challenge, we believe, comes a new solution that expand our engineering frontier.

OUR DNA

At SNA, we are committed to expanding our expertise, increasing our efficiency and striving for excellence -- the key internal factors that define our service and shape our development, now and into the future.

Founded on the sound professional knowledge of our management and workforce, we are a multi-disciplinary team that brings integrated insight to projects demanding diverse skills, experience and technology. Not resting on our laurels, we are constantly on the lookout to deepen and broaden our expertise.

Our operation is efficiency-driven by design. The aim is to not just for team members to work seamlessly within the organisation, but also with our clients and all project stakeholders. We are with our clients way beyond the design stage in order to see every project through to successful completion.

By putting all the best effort into our action, excellence is the only benchmark against which we measure our performance in each and every project we undertake. Strong delivery is a quality we take great pride in. We value all projects, big and small, and are committed to delivering nothing but the best.



VISION

To contribute to an environment that supports aspiration, initiatives and progress for today's world and beyond.

MISSION

To be a trusted partner with optimum solutions and maximum capabilities that realise our clients' success.

CORE VALUES

Our company is founded on the cornerstones of:

Quality

We are committed to setting high standard for design, planning, budget control, time management and human resources to deliver all-round satisfaction.

Innovation

We seek to stay at the forefront of building trends by making smart investment in solutions, technology and techniques.

Progressiveness

We focus on a sustained effort in self-improvement that not just raises the level of our professional attainment, but also leads us to new opportunities.

Relationship

We strive for success by achieving customer satisfaction, trust and loyalty that come with a long-term working relationship.

THE SNA FORCE

At SNA, our people are the major force that drives the Company forward in a dynamic engineering landscape. The Company is powered by a strong and stalwart team with extensive professional knowledge across the spectrum of engineering consultancy services.

This force is spearheaded by our directors, who are industry veterans with over 20 years' hands-on experience in the fields of civil, structural and geotechnical engineering. Their understanding of the challenges, pitfalls, opportunities and possibilities in engineering consultancy has proved invaluable in terms of experience transfer, skill upgrades and career development for our staffers.

We value attitude and aptitude as much as capabilities and competence. Working as an integrated team, each member of our staff is indispensable in the total solution offered to our clients. Over time, they have built network of numerous working relationships with not just our clients, but also our business partners, associates and suppliers.

People make a company successful. The combined insight, knowledge and information of our staffers enable us to continue building, and sustaining, an impeccable track record of high performance.

Committed to boosting our human capital, we continue to lead the way in a fast-changing building and construction environment by recruiting people with industry-leading capabilities and best-in-class performance.

Dato' Ir. Robert Ang
Founding Director



Employment History

- SNA Consult Sdn Bhd
Director 1999 - Present
- Villaraya Construction Sdn Bhd
Director 1997 - 1998
- BG Jurutera Perunding Sdn Bhd
Engineer 1995 - 1997

Qualification

- Bachelor of Engineering
University of Calgary,
Alberta, Canada

Affiliations

- Member of Institution of Engineers, Malaysia (M.I.E.M)
- Member of Institution of Engineers, Australia (M.I.E. Aust)
- Member of ASEAN Engineers



CAPTURING OPPORTUNITIES

A professional engineer with over 23 years of experience, Dato' Ir. Robert Ang Huck Koon is no stranger to the building and construction scene in Malaysia. He joined the industry after graduating with a Bachelor of Engineering from the University of Calgary, Canada.

Making his career debut in 1995, his professional experience continues to grow with a track record of mixed development and building projects. Dato' Ir. Robert Ang Huck Koon landed his first director position in 1997 before taking the helm at SNA Consult Sdn Bhd in 1999. He plugged right in, and has since been leading the structural engineering activities undertaken by the Company.

In his capacity, Dato' Ir. Robert Ang Huck Koon is responsible for the conceptual and design through tendering to the construction stage, managing and providing professional advice on the day-to-day duties carried out by the SNA engineering team.

Dato' Ir. Robert Ang Huck Koon admits that it is important to keep track of the micro and macro environment in order to capitalise on the opportunities presented by the nation's positive development, for not just the Company but all its clients, stakeholders and employees.

Ir. Bobby Soon
Director



Employment History

Qualification

Affiliations

MEETING CHALLENGES

Overseeing all infrastructure aspect of SNA's projects is Ir. Bobby Soon, a Universiti Putra Malaysia graduate with a master's degree in Water Resource Engineering and a bachelor's degree in Civil Engineering.

With over 21 years' solid industry experience, Ir. Bobby Soon specialises in engineering consulting, design and planning, and providing field service to support the development of infrastructure in an efficient and sustainable manner.

He began his professional career in 1998 and received his first appointment as a company director in 2002. He joined SNA in 2009, bringing with him experience in a complete spectrum of infrastructure and building projects. As head of the infrastructure operation, Ir. Bobby Soon provides leadership in devising solutions that answer the client's infrastructure needs across Malaysia today.

Ir. Bobby Soon reckons that challenges are to be embraced to facilitate growth. The more intense the experience, the more satisfying the results. It is, therefore, essential for all staff members to come together and meet challenges by being prepared, open-minded and committed.

- SNA Consult Sdn Bhd
Director 2009 - Present
- Jurutera Perunding Primareka Sdn Bhd
Director 1998 - 2009
- Master in Science (Water Resources Engineering)
University Putra Malaysia
- Bachelor of Civil Engineering (Hons)
University Putra Malaysia
- Facilitator of GREEN BUILDING INDEX MALAYSIA (GBI)
- Member of Institution of Engineers, Malaysia (M.I.E.M)
- Member of Malaysia Water Association (MWA)
- Qualified person of Suruhanjaya Perkhidmatan Air Malaysia (SPAN)
- Panelist for Board of Engineer Malaysia (BEM) Accreditation Council



Ir. Low Wuu Shin
Director



Employment History

- SNA Consult Sdn Bhd
Director 2011 - Present
- Trispec Engineering Sdn Bhd
Director 2011 - Present
- BBN Development Sdn Bhd
Senior Project Manager 2008 - 2011
- Geo-Management Sdn Bhd
Structure & Geotechnical 2000 - 2008
- TDC Engineering Consultants Sdn Bhd
Structure & Geotechnical 2000 - 2008
- Rekanan Jurutera Perunding Sdn Bhd
Structural Engineer 1999 - 2000
- LWC Precast Sdn Bhd
Draughtsman 1999

Qualification

- Bachelor of Engineering (Hons) in Civil Engineering - University of Technology Malaysia
- Master of Philosophy in Civil Engineering - University of Nottingham

Affiliations

- Member of Board of Engineers, Malaysia (B.E.M)
- Member of Institution of Engineers, Malaysia (M.I.E.M)

DELIVERING EXCELLENCE

Ir. Low Wuu Shin is in charge of SNA's geotechnic division. Graduated from the University of Technology Malaysia with a Bachelor of Engineering (Civil), Low has two decades of industry experience behind him.

With over 20 years experience, Ir. Low Wuu Shin has built expertise in foundations and geotechnics, covering ground investigation and site analysis, foundation design and construction, deep excavation and basement, ground improvement and underpinning and slope stabilisation, among others.

Proficient with a wide range of structural and geotechnical software, Ir. Low Wuu Shin leads his team of engineers to provide analyses on pressure and distribution, load, vertical displacement, stability and their application into engineering designs, delivering reliable, cost effective and innovative solutions.

Drawing from solid professional knowledge and extensive experience, Low works with a strong sense of commitment, subscribing to the belief that continually pushing the frontier of excellence makes an engineering consultancy stand out from the pack.



Our competitive advantage, now and into the future, depends primarily on our capability in continually outperforming ourselves. At SNA, we are committed to investing in human resource, innovation and technology to stay confidently at the forefront.

INVESTING IN EXCELLENCE

Our Human Resource

Outstanding consulting service requires the right knowledge, skills, attitude and abilities. Our people are our asset and our answer to the clients' needs. The Company spares no effort to recruit, retain and motivate quality employees. Comprising first-rate engineers, technicians, draughtsmen and administrators, our workforce has what it takes to deliver exceptional work. Meanwhile, the Company is dedicated to realising long-term professional upgrading and career growth for our staffers by way of training sessions and workshop.

Our Innovation Drive

In taking client requirements to the project level, we need to make optimal use of our innovative capacities to provide efficient solutions, to overcome obstacles and to achieve best possible results. Each project has its unique technical, environmental, financial and organisational conditions; existing solutions do not always suffice. At SNA, innovation is a conviction at all levels. We are committed to investing our resources, time and energy to pursue new and better ways of fulfilling our tasks.

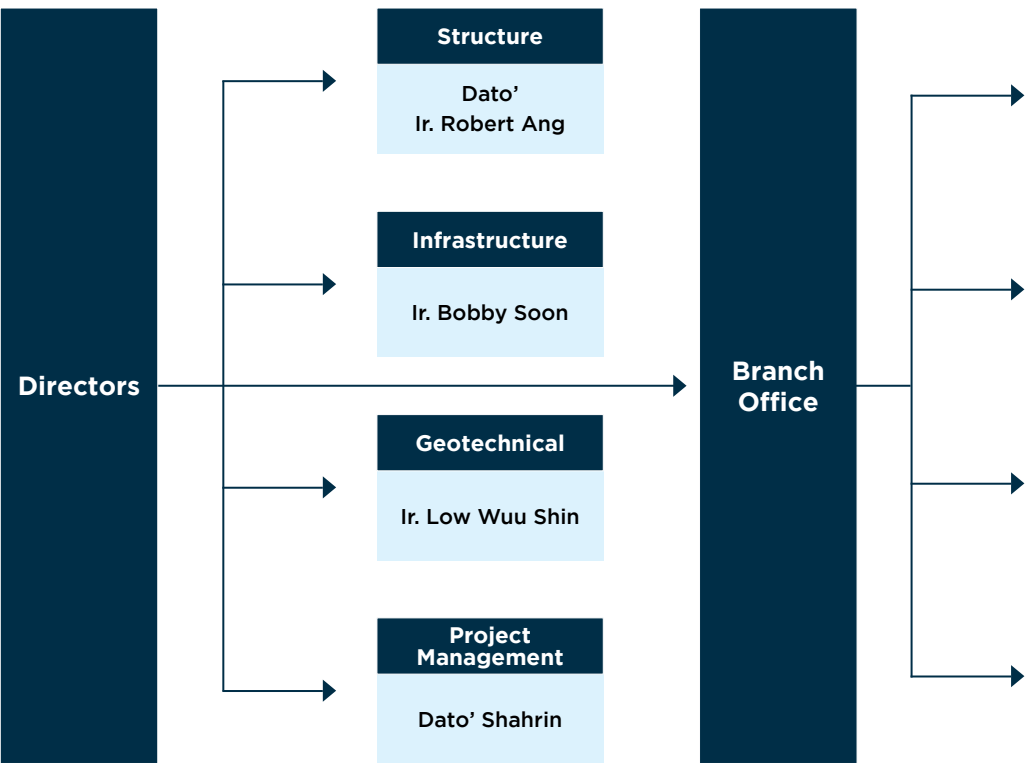
Our Technology Edge

Championed by our director Ir. Low Wu Shin and the Company's technical personnel, computer competence has been built as an integral part of our engineering process, rather than as a support function. Over the years, the Company has embraced computers and CAD technology, investing in software for data collection, technology input, analysis and compilation. The application of computer-aided design, draughting, modelling and digital backup is an integral part of our service as we chart the way forward.

We are using the following engineering software, among others, to provide industry-leading solutions:

- | | | |
|--|-------------|----------|
| • Autodesk Building Design Suite | • CSS Tekla | • Itasca |
| • Autodesk Infrastructure Design Suite | • CSC Orion | • MES |
| • Autodesk Civil 3D | • CSI Etabs | • MXRoad |
| • Autodesk Autocad 2012 to 2019 | • Esteem | • Plaxis |
| • Bentley Ram Concept | • Geo-Slope | • Prokon |
| • Bentley Staad Pro CSI SAFE | • Gstar | • Zwcad |
| • CSI SAP2000 | • Infravera | |

MANAGEMENT STRUCTURE



Puchong	No. 34-3, Floor 2, Jalan PU 7/2, Pusat Bandar Puchong Utama, Taman Puchong Utama, 47140 Puchong, Selangor.
Penang	No. 58-7-1, Fortune Heights, Jalan Cantonment, 10450 Georgetown, Penang.
Johor	1st Floor, B3-03, Danga Bay, Jalan Skudai, 80200 Johor Bahru, Johor.
Sarawak	Lot 1727, Jalan Rock, Bong Chin Terrace, 93350 Kuching, Sarawak.



COMMITMENT TO CLIENT’S REQUIREMENTS AND KEY PERFORMANCE INDEX (KPI)

Identified Key Result Area

Identified Core

Competency Area

STEP 01	STEP 02	STEP 03	STEP 04
Product Design <ul style="list-style-type: none">Outline proposalScheme designDetail designCustomer feedback via focus group survey	Authority Approval <ul style="list-style-type: none">Understanding authority requirementsSubmission of planObtaining plan approval	Tendering & Award <ul style="list-style-type: none">Specification and tender drawingsEvaluation of tenderer	Post Contract Administration <ul style="list-style-type: none">Quality of servicesQuality of works/productsWork progressCost controlDrawing and record control

Planning & Organization	Decision Making & Judgment
Teamwork	Authority Networking

Communication (Oral & Written)	Innovative & Creativity
Process & Job Knowledge	Coordination with the Client & Contractor

CAPABILITY & COMPETENCY

SERVICES AND SOLUTIONS

In today's built environment, we need to deal with technical intricacy, to tackle challenges, to eliminate interruption and to prepare for unpredictability, besides fulfilling duties required by our clients. This way, we pledge to save our clients risk, time and money.

We have a track record of working closely with our clients and all levels of the project team. On our part as engineering consultants, it would mean keeping abreast of the latest trends and developments within and beyond the construction industry; collecting information on new tools, techniques and technology available; and being well-versed with newly-enacted legislation, in order to offer practical, cost-effective and environmentally-sensitive solutions and facilitate successful completion of the projects.

Our capabilities spanning the breadth and depth of civil, structural and geotechnical engineering cover all types of residential and commercial construction, giving us the competitive advantage to complete projects of all scales to the highest industry standards.



CIVIL ENGINEERING

The world is increasingly demanding fast response to its momentum toward progress and more effectiveness in undertaking smart and sustainable civil construction projects. From providing expert advice on project design, planning and management; through compiling assessment, drawings, plans, schedules and costings; to finalising construction plans, monitoring site activities, meeting compliance requirements and solving issue and problems, we focus on delivering top-notch civil engineering solutions that answers today's needs.



We provide an extensive range of civil engineering services and solutions including:

EARTHWORKS



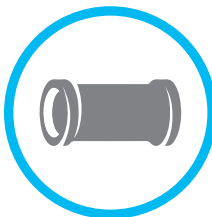
Employment of advanced computerised analysis ensures that all earthwork platform levels are designed to minimise or eliminate imported fill or excess cut in a time-efficient manner, while earthwork movement is being meticulously planned. Meanwhile, retention measures are designed to prevent siltation and pollution of the surrounding area.

ROADS AND DRAINS



Compliance with statutory and public safety standards is assured with all due professional care when it comes to designing and planning of roads and drains. Existing and alternative accesses to the project sites are thoroughly analysed, while drains are designed to effectively prevent flooding upstream, within the site and downstream.

SEWERAGE



Working with reputable turnkey sewage treatment plant contractors, we undertake wastewater assessment, and supervise the design, building and maintenance of treatment systems in line with existing public sewer lines. We are responsible for preparing detail design and contract documents pertaining to sewerage planning, while providing management with specialist input.

WATER SUPPLY



We generate water supply solutions based on full investigation of available water sources, taking into consideration the technical, ecological and economic aspects based on guidelines of the authorities. As an adviser on the planning, design and management of water supply solutions, we ensure that regulatory requirement is fully addressed.

INDEPENDENT CHECK



Independent checks are conducted on other consultants' designs to provide third-party assessment on behalf of our clients. We provide detailed reports on the findings, which include a declaration on the safety aspects pertaining to the design and construction. Recommendation will be made to rectify any design faults or construction defects.



STRUCTURAL ENGINEERING

The construction industry is dynamic. It is powering up to deliver structures of the scale and complexity beyond our imagination just a few decades ago. This demands solutions for structures to remain strong, stable and safe over time. Our task is to address the challenges of constructability in view of aspiring and ambitious development in the built environment, tailoring each of our designs and plans to suit the identified conditions and constraints, as well as developing the best possible outcome.

We provide an extensive range of structural engineering services and solutions including:

STRUCTURAL DESIGN



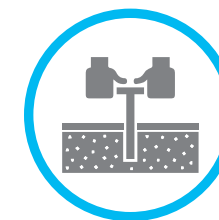
Our structural designs are generated with due consideration given to cost, materials and supplies, manpower, regulations and logistics, among others. All structural concepts and drawings are reviewed by SNA's panel of directors and senior engineers before submission to the authorities for approval. Our structural design of load bearings/shear walls is recognised for being high in quality, constructability and cost-efficiency.

SITE SUPERVISION



We undertake to supervise the building of infrastructures, sub-structures and superstructures, to solve problems and to verify contractor's claims. Widely respected for our capabilities in structural engineering, we ensure that work carried out by the contractors on site adheres to the construction drawings and conform to contract specification.

SITE TESTING



Site testing is an integral part of our structural engineering services to ensure that construction proceeds according to the contract specification. Our service includes periodical checking with various types of field equipment for quality control tests on site to ascertain that materials as per specification are used throughout the entire construction.

INDEPENDENT CHECK



We are also commissioned by our clients to evaluate, analyse and review the design of any structural works by another party, and carry out independent calculations to determine the adequacy of the structural elements. The scope of work covers areas as stipulated by the guidelines of the Ministry of Housing. Reports compiled are submitted with a declaration of our findings.



GEOTECHNICAL ENGINEERING

We are committed to employing our expertise in all parameters of geotechnical engineering in order to serve the clients' needs across the spectrum of building and construction. We provide trusted support for their projects by way of solutions for stable groundwork and strong foundation, upon which structures of varying complexity and scale are successfully built. Besides lending our insight into soil and rock mechanics from an engineering perspective, we are also equipped with specialist knowledge in slope stability and retaining structures.

We provide a full range of geotechnical engineering services including:

GEOTECHNICAL ENGINEERING ASSESSMENT



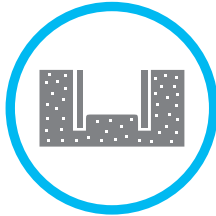
We are tasked with devising ground treatment plans, taking into account risk mitigation, completion time, project cost and procedures. Our geotechnical teams investigate the proposed sites and the adjacent slopes, and conduct testing on the soil, rocks and water seepage to compile thorough site investigation information on sub-surface stability and water conditions.

FOUNDATION ANALYSIS AND DESIGN



Evaluating and interpreting specific site data, we deliver sound foundation designs and construction recommendations for a wide range of development projects. Conditions about the earth pressure, bearing capacity, shear strength, deformation and pore pressure distribution are established and incorporated into the designs. Soil treatment programmes are also available as part of the cost-effective foundation solutions.

EXCAVATION AND STABILITY



We have mastered stability solutions utilising both time-tested and new designs for practical problems pertaining to foundations, anchors, slopes and excavations. Our experience covers analysis and design of basements walls constructed under constraint condition, temporary supporting systems, slope protection and stabilisation, as well as evaluation of adverse effect of excavation on adjacent structures.

CONSTRUCTION CONTROL AND MONITORING



Part of our professional service is to provide thorough supervision to foundations and excavation works to ensure that all specifications are met and all problems tackled promptly and efficiently. Surface movements of slopes and deep excavations are closely monitored with the help of inclinometers, settlement gauges and piezometers to evaluate their impact and provide required remedial measures.

INDEPENDENT CHECK



We are experienced in undertaking detailed geotechnical inspection. In our capacity as an independent consultant, we provide third party review and evaluation of designs created by another consultant to facilitate engineering approval. Designs and relating structures are assessed, while the overall stability of any existing structures is studied. Practical solutions addressing any stability issue will be provided as part of a comprehensive report of findings.



STRATEGIC ADVISE & OTHER SERVICES

Equipped with expansive professional knowledge, skill sets and combined experience, SNA is a highly respected and credible advisor when it comes to project strategy and provision of related services, both on and off the site, for building and construction projects commissioned by the government, industries, developers and construction firms. We work closely with the clients, architects, surveyors, contractors, the authorities and all stakeholders to provide the trusted opinion, strategy, support and execution required throughout the project duration.

We have the expertise and ability to furnish our clients with achievable advice that enhance the process, cost, manpower and time efficiency of the projects. The scope of our advisory services covers reports, documentation, analysis, audit, assessment, management, administration and recommendation, while other services we undertake for our clients include equipment installation, fabrication, piping and steelwork, as well as process automation.



Strategic Advise

- Due Diligence Report
- Cost Analysis, Cost Control and Value Engineering
- Project and Construction Management
- Contract Administration
- Procurement
- Final Contract Accounts
- Traffic Impact Assessment
- Traffic Audit Study
- Detail Design Drawing Production
- Tender Documentation, Evaluation and Award Recommendation
- Harbour, Off Shore Protection, Jetty Design

Other Services

- Building Survey Inspection
- Water & Piping Works
- Storage Tanks and Support Steelwork
- Engineering Fabrication Works for Palm Oil Refineries & Fractionation Plants
- Oleo-Chemical Plant & Equipment Installation
- Palm Oil Mills Plant & Equipment Fabrication & Installation
- Process Automation in Palm Oil Mills

PROVEN PROJECT PORTFOLIO

Having achieved an impressive track record over the years, we are confident that we have what it takes to move with the times and to deliver successfully-completed work that matches, if not exceeds, expectation. We are committed to understanding what our clients need and want, in order to fulfil their requirements on time, on budget and on scope. This commitment to achieving optimal performance has won us substantial repeat business, goodwill and referral, as well as long-term working relationship that our clients appreciate and we truly value.

The many projects we have successfully completed over the years come under a wide range of categories in the built environment. Varying in both scale and scope, they include high-rise and low-rise buildings for residential and commercial use, townships and mixed developments, shopping complexes, residential houses, hotels, club houses and show villages, shop lots and shop offices, institutional buildings, factories and warehouses and infrastructure projects, which are found all over the nation.

HIGH RISE DEVELOPMENT

- COMMERCIAL OFFICE
- CONDOMINIUM
- SERVICED APARTMENTS

■ Felcra Office Tower -
Jalan Semarak,
Kuala Lumpur



■ Setia Sky 88 -
Johor Bahru



■ Damansara Town Centre - Damansara Heights, Kuala Lumpur

■ Clearwater Residences
Damansara Heights
Kuala Lumpur



■ Vila Vista - Cheras, Kuala Lumpur



■ The Park 2 Residences - Bukit Jalil, Kuala Lumpur

■ Arte Plus - Ampang
Kuala Lumpur



■ Prasarana Brickfield, Kuala Lumpur



■ The Vertical UOA - Bangsar South, Kuala Lumpur



■ Faber Vista Residential Development,
Lorong Delapan, Kuala Lumpur



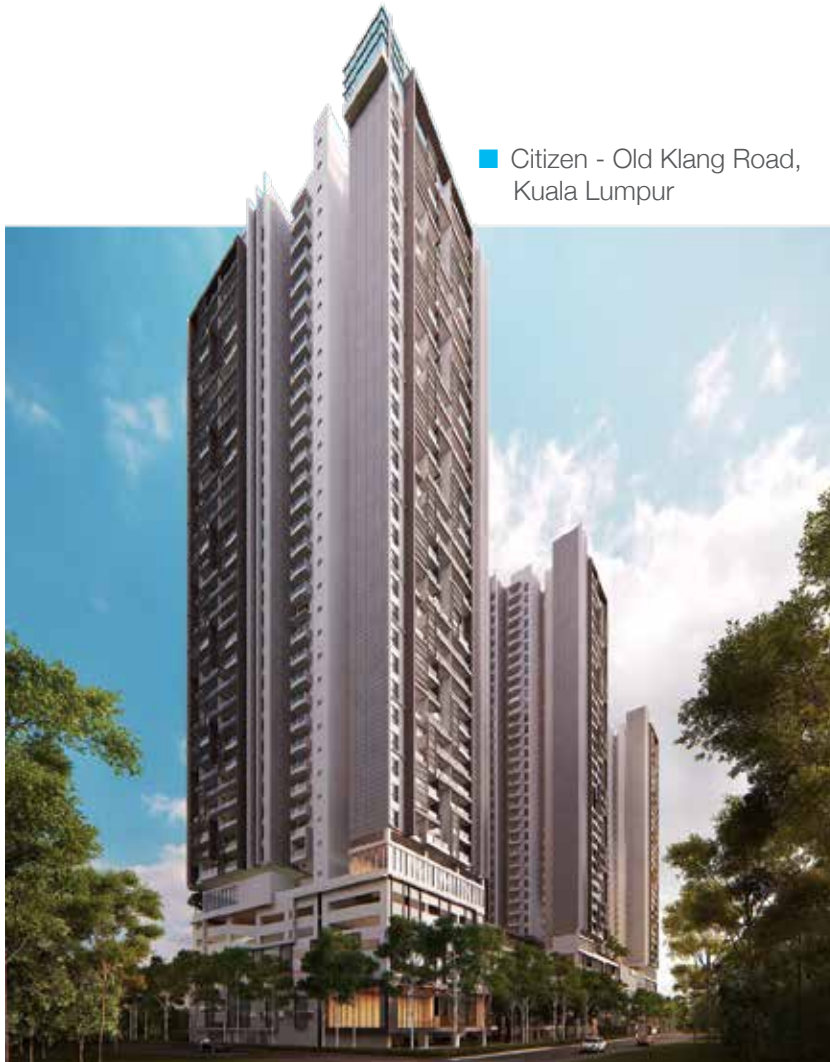
■ The Haute, Dato Keramat,
Kuala Lumpur



■ Urbana Residence - Ara Damansara,
Petaling Jaya



■ Urbana Residence - Ara Damansara,
Petaling Jaya



■ Citizen - Old Klang Road,
Kuala Lumpur



■ Desamas Residential Development,
Taman Danau Desa, Kuala Lumpur



■ Citizen - Old Klang Road, Kuala Lumpur



■ Sky Peak Residence - Taman Setia Tropika, Johor Bahru



■ TNB Quarters - Kelana Jaya, Selangor

■ Pacific Place - Ara Damansara, Selangor



■ Gallery @ U-Thant - Kuala Lumpur



■ Changkat View Condominium - Sri Hartamas, Kuala Lumpur

■ Parkview Service Apartment - Kuala Lumpur City Centre, Kuala Lumpur



■ Seasons Garden Residences Wangsa Maju, Kuala Lumpur



■ Pertama Residency, Taman Kobena, Cheras, Kuala Lumpur



■ Riana Green East - Wangsa Maju, Kuala Lumpur

■ Setapak Green - Jalan Semarak Api, Kuala Lumpur



■ Sri Putramas Apartment - Jalan Kuching, Kuala Lumpur

MIXED DEVELOPMENT



■ Cyber Square -
Cyberjaya, Selangor



■ Arte Plus - Jalan Ampang (Avante), Kuala Lumpur



■ Pacific Star - Petaling Jaya, Selangor



■ Melati Ehsan - Johor Bahru



■ Danga Venice & Danga Masterplan -
Danga Bay, Johor Bahru, Johor



■ Tropicana - Danga Bay
Danga Bay, Johor Bahru, Johor



■ SKS Pavillion Service
Apt. & Hotel - Johor Bahru



■ Vertical Phase 3, Jln
Kerinchi, Kuala Lumpur



■ Iskandar Waterfront A2 Mix Development -
Johor Bahru



■ Goldmart Mixed Development
Pulau Melaka (Hatten)

LOW RISE DEVELOPMENT



■ Taragon Villa Puteri Ledang - Jalan Bukit Ledang, Kuala Lumpur

SHOPPING COMPLEX

- NEW & UPGRADING WORKS
- ALTERATION & EXTENSION WORKS (AEI)

■ Bukit Jalil City - Bukit Jalil, Kuala Lumpur



■ Kemanyan City - Johor Bahru, Johor



■ 1 Mont Kiara - Mon't Kiara, Kuala Lumpur

■ 1 Utama Shopping Centre - Bandar Utama, Selangor



■ Seremban Parade - Seremban, N.S.



■ The Atmosphere Phase 2E - Seri Kembangan, Selangor

■ Ipoh Parade - Ipoh, Perak



■ Ipoh Parade - Ipoh, Perak



■ Klang Parade - Klang, Selangor



■ Klang Parade - Klang, Selangor

HOTEL / CLUB HOUSE / SHOW VILLAGE



■ Taragon Puteri Bintang - Bukit Bintang, Kuala Lumpur

■ PD One Water Villas - Port Dickson, Negeri Sembilan



■ The Normad Sucasa - Jalan Ampang, Kuala Lumpur



■ Johor Golf & Country Club (JGCC) - Johor Bahru



■ The Normad Bangsar - Bangsar, Kuala Lumpur



■ The Normad Bangsar - Bangsar, Kuala Lumpur

■ Kinrara Residence Clubhouse - Puchong, Selangor



■ Nexus Clubhouse - Bangsar South, Kuala Lumpur



SHOP LOT

■ Bukit Jalil City - Bukit Jalil, Kuala Lumpur



■ Bukit Jalil City - Bukit Jalil, Kuala Lumpur



■ Matahari Group Shop Lot - Pajam, Negeri Sembilan

RESIDENTIAL DEVELOPMENT

- BUNGALOWS
- LINKED HOUSE

■ Dato' Teong Teck Lai Bungalow



■ Dato' Azizul Bungalow



■ Blu Constellation - Sri Kembangan, Selangor



■ Idaman Hills - Gombak, Selangor

■ Kinrara Residence (Phase 2B) - Puchong, Selangor



■ Kinrara Residence (Phase 2B) - Puchong, Selangor



■ Kinrara Residence (Phase 2C) - Puchong, Selangor



■ Taman Putra Prima (Phase 4A) - Puchong, Selangor



■ Taman Putra Prima (Phase 4B) - Puchong, Selangor



■ Taman Putra Prima (Phase 8A) - Puchong, Selangor



■ Riverview Kemensah - Melawati, Kuala Lumpur

INSTITUTIONAL BUILDINGS

- HOSPITAL
- HIGH COURT
- UNIVERSITY
- SCHOOL
- SPORTS COMPLEXES
- POLICE QUARTERS

■ Hospital Taiping - Taiping, Perak



■ Sunway Medical Centre - Seberang Jaya, Penang



■ Selgate Rawang Hospital - Rawang, Selangor



■ Pantai Hospital Ayer Keroh - Ayer Keroh, Melaka

FACTORY & WAREHOUSE

■ Panasonic Warehouse - Shah Alam, Selangor



■ Deluxe Food Factory - Klang, Selangor



■ Condensed Milk Factory - Klang, Selangor



■ Deluxe Food Factory - Klang, Selangor



■ Condensed Milk Factory - Klang, Selangor

■ Jaring Metal Factory - Shah Alam, Selangor



■ Steel Melting Factory - Klang, Selangor



■ Jaring Metal Factory - Shah Alam, Selangor

INFRASTRUCTURE WORKS

- JETTY & HARBOURS
- HIGHWAY & BRIDGE
- ROADS & DRAINAGE
- LAND RECLAMATION

■ 40M Bridge for Mixed Development - Mukim Jelutong, Daerah Johor Bahru



■ U-Turn Elevated Bridge - Lebuhraya Bukit Jalil, Kuala Lumpur

■ Pulau Ketam Jetty - Klang, Selangor



■ Elevated Bridge - New Pantai Expressway to Gagasan Maktrik's Development

■ Land Reclamation - Daerah Barat Daya, Pulau Pinang



■ Elevated Bridge - Damansara Heights, Kuala Lumpur

■ Changkat Kiara - Dutamas, Kuala Lumpur



■ Riverview Kemensah - Melawati, Kuala Lumpur



■ Taman Putra Prima - Puchong, Selangor



■ Verge 32 - Melawati, Kuala Lumpur



■ Idaman Hills - Gombak, Selangor



■ Changkat View - Sri Hartamas, Kuala Lumpur

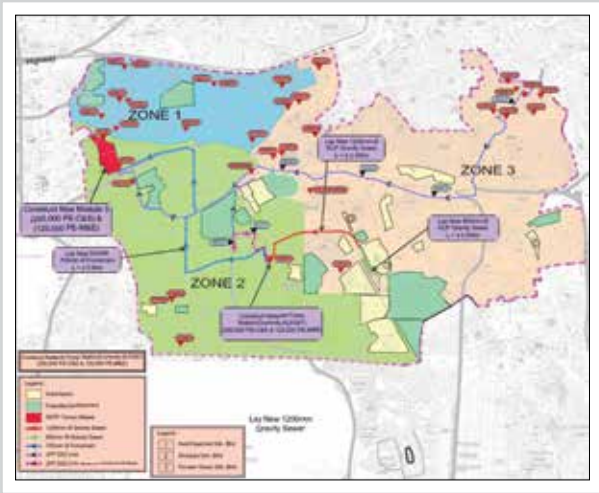


■ Plaza Damas - Sri Hartamas, Kuala Lumpur

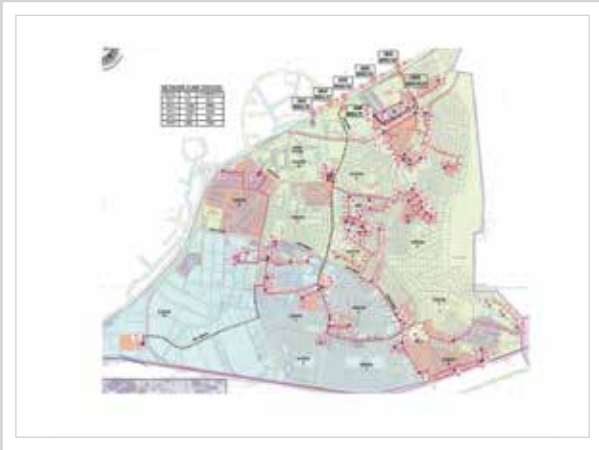
SEWERAGE MASTER STUDY



■ Sewerage Master Plan for Taman Putra Prima, Mukim Dengkil, Daerah Sepang, Selangor Darul Ehsan.



■ Master Sewerage System Upgrading Scheme For Bukit Jalil Catchment



■ Sewerage Project Under Program Greater Kuala Lumpur and Klang Valley (D48) for the Ministry of the Green and Water Technology Ministry (Ketttha)



■ Conceptual Rationalization For Lower Kerayong Catchment, Kuala Lumpur.



■ Sewerage Master Plan for Bandar Baru Nilai, Mukim Setul, Daerah Seremban, Negeri Sembilan.

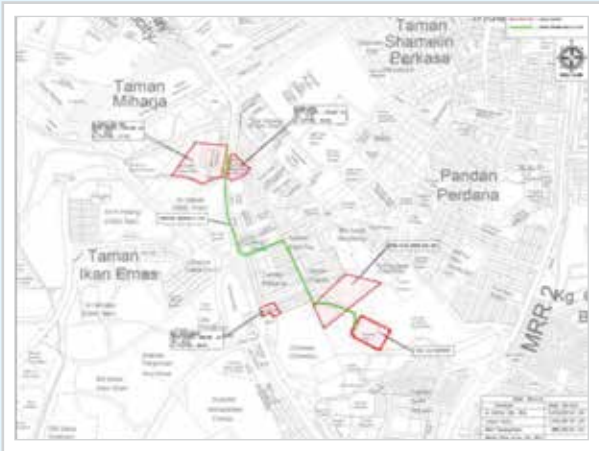


■ Sewerage Master Plan For Southville City, Mukim Dengkil, Daerah Sepang, Selangor Darul Ehsan

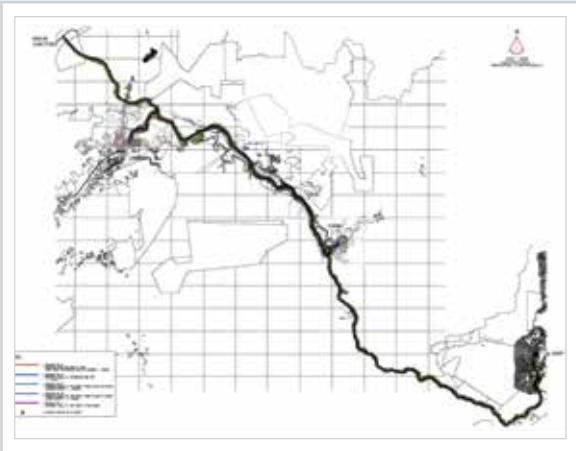
**WATER PIPELINE
INTEGRATED WATER SUPPLY SCHEME (IWSS) PROJECT**



■ Proposed Bukit Jalil Integrated Water Supply (IWSS) for Messrs. Pioneer Haven Sdn Bhd and Sinerjuta Sdn Bhd.



■ Proposed Integrated Water Supply (IWSS) at Pudu Hulu for Cordova Land Sdn Bhd.



■ The Feasibility Study for The Proposed Water Supply Along Bakun Road From Labang to Tubau Areas, Bintulu Division, Sarawak



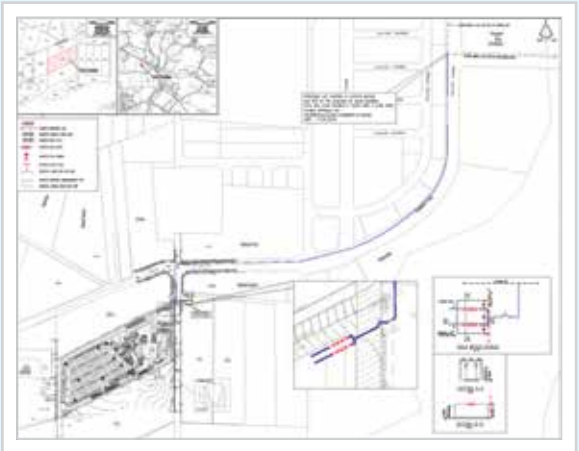
■ Proposed Integrated Water Supply (IWSS) at Lot 391, Section 87A, Jalan Semarak and Lot 390, Section 87A, Gurney Housing Road, Kuala Lumpur Messrs. Felcra Berhad and Synergy Promenade Sdn Bhd.



■ Proposed Integrated Water Supply (IWSS) for Impian Ekspresi Sdn Bhd and Jendela Mayang Sdn Bhd.



■ Proposed Establishment of Integrated Water Supply Scheme (IWSS) at Jalan Yap Kwan Seng Selatan for Guidelines Ikhtisas Sdn Bhd.



■ Proposed Upgrading of The Existing IWSS3 (Low Zone) for Development for M/S TWY Development Sdn Bhd (TWY,PT57503), TWY Development Sdn Bhd (MK2,PT57502), Bluewater Horizon Sdn Bhd (Lot2871 & 2872), Atlas Rhythm Sdn Bhd (Lot 1589), Modern Pandora Sdn Bhd (Lot 80663 & 80664), Yakin Land Sdn Bhd (Lot 1579), Good Axis Sdn Bhd (Lot 13752), GB Kiara Sdn Bhd (Lot 2356), GB Kiara Sdn Bhd (Lot 1588 & 2915) & Alif Mesra Sdn Bhd (Lot 13753), Segambut Dalam, Mukim Batu, Wilayah Persekutuan, Kuala Lumpur

SNA CONSULT SDN BHD (476864-H)

Kuala Lumpur Head Quarter

Unit C113, 213 ,313 & 3A13, Block C, Damansara Intan
No. 1, Jalan SS20/27, 47400 Petaling Jaya, Selangor
Tel: +603-7729 2299 Fax: +603-7729 2599

Puchong Branch

No. 34-3, Floor 2, Jalan PU 7/2
Pusat Bandar Puchong Utama
Taman Puchong Utama, 47140 Puchong, Selangor
Tel: +603-8066 8031

Johor Bahru Branch

1st Floor, B3-03, Danga Bay, Jalan Skudai
80200 Johor Bahru, Johor
Tel: +607-230 9699 Fax: +607-235 3299

Sarawak Branch

Lot 1727, Jalan Rock, Bong Chin Terrace
93350 Kuching, Sarawak
Tel: +6082-418440 Fax: +6082-250010

Penang Branch

No. 58-7-1, Fortune Heights, Jalan Cantonment
10450 Georgetown, Penang
Tel: +604-218 9464

 snacslt@gmail.com

 www.snaconsult.com.my